

MAGNUM EFL



MAGNUM for epi-fluorescence.

Trinocular microscope with epi-fluorescence illumination - HBO 100W.

Product reference. 2747.2000

Specifications identical to standard Magnum with the following differences:

Optical head: trinocular, including vertical photo/video port (Ø30mm)

Objectives: Infinity planachromatic (CCS Optics)

Fluorescent attachment: - centrable through a centring device

- Focusable with rack and pinion height adjustment system
- A fluorescent filter turnplate with 5 positions:

Filters:

- UV (ultraviolet) excitation filter 330-400 nm, barrier filter 425nm
- V (violet) excitation filter 395-415 nm, barrier filter 455nm
- B (blue) excitation filter 420-485 nm, barrier filter 520nm
- G (green) excitation filter 460-550 nm, barrier filter 580nm

Illumination: Brightfield 6V/30W (variable)

Reflected: High pressure Mercury bulb - HBO 100W

Supplied with: external lamphouse and power supply (for fluorescent attachment) with connecting cable and Anti-UV protection screen.

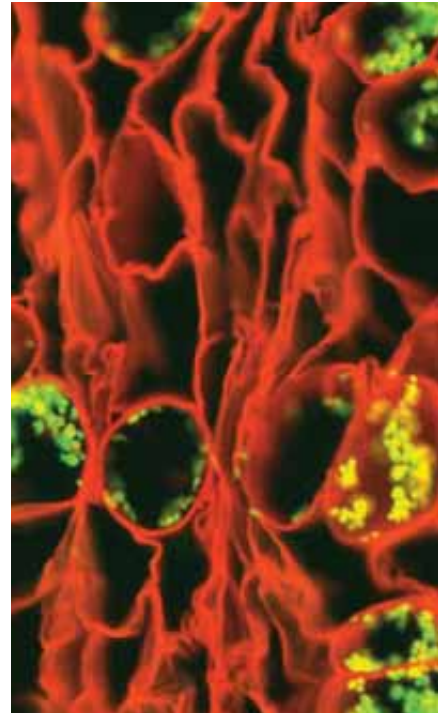
Optional accessories:

- Polarising Set
- Phase Contrast Sets
- Darkfield Condensers
- Digital & CCD cameras

External lamphouse for high pressure mercury bulb HBO-100W.

External power supply delivered with power cable and connecting cable.

Supplied with fluorescence free oil (10 ml) and blocking plate for stage.



Fluorescence LED Module & Microscope.

Product reference. 2766.0000

Standard specifications to 2747.2000 with the following differences:

- Clamp-on LED source adapter
- High efficiency back-light illuminator
- 3 position emission filter holder
- Excitation wavelengths from UV to Red (Blue and Green included)
- One wavelength per LED cassette
- 50,000+ hours of LED light source life
- Very high S/N ratio for all wavelengths
- 7.5V DC low voltage operation

Optional accessories:

- Battery pack option for field work
- 6 position filter holder

MAGNUM PLR



MAGNUM for polarisation.

Product reference. 2653.0000 (Binocular version)

Optical head:

- Binocular or Trinocular, inclined at 30° with Bertrand lens (iris diaphragm) Interpupillary distance adjustment (Siedentopf type): 55 to 75mm Dioptic compensation on both eyepiece tubes

Slit under the optical head to accept lambda compensating plates (included)

Eyepieces:

- High eyepoint 10x/18mm wide-field additional eyepiece single focusable 10x/18 with cross-line scale

Objectives:

Tension free and parcentered

- SP 4x / 0.10 / 160 / 0.17
- SP 10x / 0.25 / 160 / 0.17
- SP 40x / 0.65 / 160 / 0.17 spring loaded
- SP 60x / 0.80 / 160 / 0.17 spring loaded

Condenser: Brightfield Abbe - NA 1.25

Polarising set: Polariser and analyser

Stage:

- Round centrable and rotating (360°)
- Graduated
- Diameter: 145mm
- Two stage clips

Focusing: Coaxial coarse & fine knobs (complete with pre-focusing mechanism & tension adjustment ring)

Illumination: Halogen 12V/30W (variable)

Mains power: 220-240V/50-60Hz

MAGNUM SLR



Product reference. 2685.0000 (Binocular)

Objectives:

Semi-planachromatic

- SP-zi 4x / 0.10 / 160 / 0.17
- SP-zi 10x / 0.25 / 160 / 0.17
- SP-zi 40x / 0.65 / 160 / 0.17 spring loaded
- SP-zi 100x / 1.25 / 160 / 0.17 (oil) spring loaded

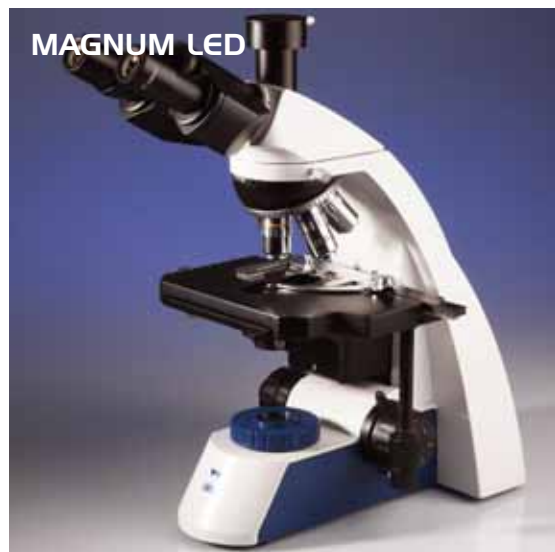
Solar power attachment:

- Polycrystalline solar panel
- Energy Converter
- Two metre power/connecting cable

An integral 12V battery ensures continuity of operation even during low sunlight periods.

240V mains operation remains available for internal use

MAGNUM LED



Product reference. 2621.7000 (Binocular)

Illumination: LED (30 hrs), 18000mcb (variable)

Power: • 9V DC

Optional accessory: • Rechargeable battery



Magnum Ordering information

Description	Product Reference	
	Binocular	Trinocular
Magnum with Semi-planachromatics 4x / 10x / 40x / 100x	2621.0000	2721.0000
Magnum with Planachromatics 4x / 10x / 40x / 100x	2622.0000	2722.0000
Magnum with Infinity corrected planachromatics 4x / 10x / 40x / 100x	2629.0000	2729.0000
Magnum for Phase contrast 10x / 20x / 40x / 100x	2638.0000	2738.0000
Magnum for Polarisation 10x / 20x / 40x / 60x	2653.0000	2753.0000
Magnum with Epi-Fluorescence 4x / 10x / 40x / 100x	N/A	2747.2000
Magnum Solar powered 4x / 10x / 40x / 100x	2685.0000	2785.0000
Magnum LED 2621.7000 4x / 10x / 40x / 100x	2621.7000	N/A

Sextuple nosepiece now available

Accessories for Magnum series

2611.1607	Eyepiece pair 16x/11,5mm wide-field
2613.1005	Eyepiece single with pointer 10x/18mm
2613.1003	Eyepiece micrometer single 10x/18mm with cross line scale 0-10mm: 0,1mm
2249.1001	Object micrometer with scale 1mm: 0,01mm used with micrometer eyepiece for calibration
2637.0104	Phase contrast set 10x - 40x: sliding phase contrast set 10x / 40x with achromatic objectives
2638.5102	Phase contrast, complete, positive: turret condenser (4 phase annular stops + brightfield position with iris diaphragm) 4 pos. phase planachromatic objectives 10x/0,25 - 20x/0,40 -40x/0,65 - 100x (oil)/1,25), centering telescope, filters (green & yellow).
2000.1000	Solar Power kit suitable for all 240v Microscopes (excluding Epi Flu models)
2747.9999	LED Epi flu attachment (upgrade) for Standard magnum B or T
2643.5501	Polarising set, analyser + polariser
2643.5209	Condenser darkfield dry (NA 0.83-0.95)
2633.5303	Condenser darkfield Cardioid (oil) (NA 1.36-1.25)
2751.6902	Microscope adapter for single lens reflex camera including projection lens
2757.2050	C-mount adapter 25mm without lens (For Medline MPX Camera)
2757.6132	Microscope adapter for 1/3 inch CCD-camera, including C-mount
2757.2126	Microscope adapter for 1/2 inch CCD-camera, including C-mount
2647.4804	Aluminium carry case magnum
2644.9202	Filter neutral Ø 32mm
2644.9211	Filter blue Ø 32mm
2644.9229	Filter ground Ø 32mm
2644.9258	Filter yellow Ø 32mm
2644.9267	Filter green Ø 32mm
2480.2075	Cleaning set: Lens cleaning tissues (20 pcs), solution (75ml) and brush

A comprehensive range of objectives, eyepieces and photomicroscopy accessories available.

Please contact Medline Scientific for further details.



Trinocular Biological Microscope with integrated camera adapter for SLR Digital or CCD cameras.

Product reference. 3100.5000

The Triton II has four objectives, attached to a revolving and reversed sextuple nosepiece with click-stop. The powerful illumination and unique condenser ensure optical brightness and clarity.

A removable Kohler illuminator (12V/50W) halogen bulb provides a level of brightness perfectly suited to photomicrography.

A set of filters can be used to heighten contrast and correct colours to guarantee crystal clear definition of ridges, cell walls, pits and particles.

An optional 100W illumination upgrade is available for both models.

TRITON II



Technical Specifications:

Optical head:

- Trinocular, inclined at 30°
- Interpupillary distance adjustment: 48 to 75 mm
- Dioptic compensation on one eyepiece tube
- Vertical photo/video port with beam-splitting prism on sliding mount

Eyepieces:

- 10x/22mm wide-field

Nosepiece:

- Sextuple reversed and revolving with click stop

Objectives: E-plan infinity corrected

- E PL 4x / 0.10 / ∞ / 0.17
- E PL 10x / 0.25 / ∞ / 0.17
- E PL 40x / 0.65 / ∞ / 0.17 spring loaded
- E PL 100x / 1.25 / ∞ / 0.17 (oil) spring loaded

Condenser:

- Swing-out condensing lens – NA 0.90 / NA 1.25
- Focusable with rack and pinion height adjustment
- Iris diaphragm

Stage:

- 185 x 142mm with built-in graduated mechanical stage and slide clamp
- 75mm transverse movement
- 55mm longitudinal movement
- Nonius reading up to 0.1mm

Focusing:

- Coaxial fine and coarse
- Pre-focusing mechanism
- Tension adjustment ring

Köhler Illumination: (variable)

- Halogen 12V/50W with integrated field diaphragm and swing-out concentrating lens
- Optional 100W illumination available

Mains power:

220-240V/50-60Hz

The Triton II is tailor-made for the working laboratory. A high level of build quality ensures it will withstand the rigours of constant daily use and a wide range of spare parts and accessories enables access to many different applications.

- Epi-fluorescence attachment with HBO 100W illumination
- Phase contrast system
- Darkfield condenser
- Heating stages

Advanced scientific microscope, with 50W illumination, ergonomic viewing head and sextuple nosepiece.

Product reference. 3100.5050

The Triton II has additional teaching heads available in either left or right hand configurations. Each head includes infinity corrected prisms and optics.

- Separate 100W illumination with power supply included to ensure even light distribution.

3100.9050 Triton II with second viewing head right side.

3100.9100 Triton II with three bino heads right hand side

3100.9200 Triton II with three bino heads left hand side

3100.9500 Triton II with five bino viewing heads

TRITON II PRO



Technical Specifications:

Optical head:

- Trinocular, with variable 'tilting' ergonomic head
- Interpupillary distance adjustment: 48 to 75 mm
- Dioptic compensation on one eyepiece
- Vertical photo/video port with beam-splitting prism on sliding mount

Eyepieces: 10x/22mm wide-field pair

Nosepiece: Sextuple reversed and revolving with click stop

Objectives: Ceti E Plan Infinity Corrected Planachromatic (CCS Optics)

- E PL 4x / 0.10 / ∞ / 0.17
- E PL 10x / 0.25 / ∞ / 0.17
- E PL 40x / 0.65 / ∞ / 0.17 spring loaded
- E PL 100x / 1.25 / ∞ / 0.17 (oil) spring loaded

Condenser:

- Swing-out condensing lens - NA 0.90/N.A1.25

- Centrabale
- Focusable with rack and pinion height adjustment system
- Iris diaphragm

Stage:

- 185 x 142mm with built-in graduated mechanical stage and slide clamp
- 75mm Transversal movement
- 55mm Longitudinal movement

Focusing:

- Coaxial fine and coarse
- Pre-focusing mechanism
- Tension adjustment ring

Köhler Illumination: (variable)

- Halogen 12V/50W with integrated field diaphragm and swing-out concentrating lens
- Optional 100W illumination available

Mains power: 220-240V/50-60Hz



Optional multi-viewing head