

Laboratory Refrigerators and Freezers

Slimline[®]



- *Laboratory Refrigerators (+1 / +8°C)*
- *Laboratory Freezers (-18 / -22°C)*
- *Plasma Freezers (-30 / -35°C)*
- *Blood Bank Refrigerators (+4°C)*
- *Combination Fridge / Freezer (+4° / -35°C)*

ilShin[®] Europe

Slimline® Laboratory / Pharmacy Refrigerators & Freezers

The Slimline® Laboratory Refrigerators and Freezers offer a wide range of configurations ranging from routine laboratory applications up to high demanding storage protocols for Blood Banking. Temperature ranges which are available:

- LabFridge line +1 / +8°C
- LabFreeze line -18 / -22 °C
- Plasma line -35°C
- Blood Bank line +4°C
- Combination line +4°C / -35°C



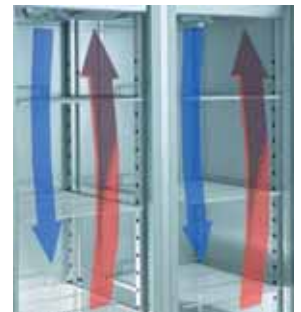
Temperature Uniformity and Recovery



Fixed doors are lighted by a 25W lamp

All temperature configurations offer forced air circulation by internal fans to ensure high temperature uniformity and fast temperature recovery. Our line is available in single door (610 liter), Double door (1325 liter) and the Combination Fridge/Freezer (2 x 286 liter)

The philosophy behind our Refrigerator and Freezer line is to offer the safest environment for your products by using our UltraSafe® temperature control system in combination with the circulating forced air.



High temperature uniformity by double evaporators for 1400 serie

Performance Features all Slimline® Refrigerators & Freezers

- Only Slimline® uses standard Stainless Steel interior and exterior on all refrigerator products;
- Microprocessor control with digital display / controller;
- Adjustable temperature set points;
- High temperature alarm;
- Low temperature alarm;
- Alarm history list;
- Date, time, alarm buzzer;
- Infrared data transmission;
- Dry contact for remote alarm;
- Door open alarm;
- Light on/off (in case of glass door);
- Auto switch off fan when door opens;
- Automatic defrost cycle and melt water evaporation in heated tray;
- Heavy-duty casters with unique built in adjustable stand;
- Chamber with rounded corners for easy cleaning;
- 60 mm of CFC-free polyurethane foam insulation;
- Always pass through standard doors because of Slimline® design: only 80 cm wide and 198 cm high.



Unique casters with adjustable feet

Slimline® Blood Bank Refrigerators & Plasma Freezers

Blood Bank Refrigerators

The supreme members of the Slimline® products are the Blood Bank Refrigerators. All Blood Bank refrigerators have standard double layer glass doors with dual bulb light and durable stainless steel roll-out drawers.



The standard 7-day chart recorder with battery backup ensures constant operation during power failures. This is the answer for safe and efficient storage of blood bags. Blood Bank refrigerators are available in single and double door units of 610 and 1325 litre.

Plasma Freezer

Slimline® offers a single door plasma freezer down to -35 °C to ensure safe storage of your plasma bags. Of course chart recorder and eight stainless steel drawers are standard in the plasma line.

Combination Line



Combination of Blood / Plasma in one solution!

For convenient storage of both blood as well as plasma in one system we designed the unique Combination line. In the upper compartment 3 drawers are available for storage of blood at a +4 °C controlled and monitored environment. The lower part also contains 3 drawers for plasma storage down to -35 °C

Two for one! This is the answer for small laboratories which need blood and plasma storage in one small footprint. The ideal solution when space, dual temperature control and performance are critical.

The BBP300 here shown with optional PLC

PLC monitor with touch screen and 12 hour temperature graph history

Instead of the 7-day chart recorder we have the innovative option of our PLC monitor:



- Two sensors monitor and data log temperature in both the upper and lower part of the chamber;
- Control and readout on colour touch screen;
- 12-hour history in graphs and tables;
- Alarm for temperature, door ajar, power, compressor and ambient;
- Special service menu with password with compressor and ambient temperature registration.



Standard Specifications **Slimline**[®] Refrigerators +1°C to +8°C



Model no:	LR700	LR700G	LR1400	LR1400G
Doors:	1 Stainless Steel Door	1 Glass Door (double layer)	2 Stainless Steel Doors	2 Glass Doors (double layer)
Door locks:	1	1	2	2
Capacity:	610 l	610 l	1325 l	1325 l
Temperature:	+1°C / +8 °C	+1°C / +8 °C	+1°C / +8 °C	+1°C / +8 °C
Air circulation:	Forced Air circulation			
Defrost:	Fully Automatic			
Ext Dimensions WxDxH mm	710 x 800 x 1985	710 x 800 x 1985	1420 x 800 x 1985	1420 x 800 x 1985
Int Dimensions WxDxH mm	590 x 675 x 1380	590 x 675 x 1380	1300 x 675 x 1380	1300 x 675 x 1380
Cabinet material:	Stainless Steel inside and outside			
Insulation:	60 mm Non-CFC, Foamed Polyurethane			
Electrical:	230 V / 50 Hz			
Certification:	CE Certified			
Weight:	135 kg	145 kg	235 kg	245 kg
Power:	8,20 kW/24 h	9,40 kW/24 h	10,10 kW/24 h	10,80 kW /24 h
Shelves: (W x D)	3 standard 530 x 650 mm	3 standard 530 x 650 mm	6 standard 530 x 650 mm	6 standard 530 x 650 mm
Microprocessor:	Adjustable setpoint, high alarm, low alarm, door alarm (audible and visual)			



Standard Specifications **Slimline**[®] Freezers

-18°C / -22°C

-30°C / -35°C

Model no:	LF700	LF1400		LDF700
Doors:	1 Stainless Steel Door	2 Stainless Steel Doors		1 Stainless Steel Door
Door locks:	1	2		1
Capacity:	610 l	1325 l		610 l
Temperature:	-18°C / -22 °C	-18°C / -22 °C		-30°C / -35 °C
Air circulation:	Forced Air circulation			
Defrost:	Fully Automatic			
Ext Dimensions WxDxH mm	710 x 800 x 1985	1420 x 800 x 1985		710 x 800 x 1985
Int Dimensions WxDxH mm	590 x 675 x 1380	1300 x 675 x 1380		590 x 675 x 1380
Cabinet material:	Stainless Steel inside and outside			
Insulation:	60 mm Non-CFC, Foamed Polyurethane			
Electrical:	230 V / 50 Hz			
Certification:	CE Certified			
Weight:	135 kg	240 kg		145 kg
Power:	12,50 kW/24 h	16,70 kW/24 h		14,2 kW/24 h
Shelves: (W x D)	3 standard 530 x 650 mm	6 standard 530 x 650 mm		3 standard 530 x 650 mm
Microprocessor:	Adjustable setpoint, high alarm, low alarm, door alarm (audible and visual)			



Standard Specifications **Slimline**[®] Blood Bank Refrigerators +4 °C Plasma Freezer -35 °C

Model no:	BB700	BB1400	BP700
Doors:	1 Glass Door (double layer)	2 Glass Doors (double layer)	1 Stainless Steel Door
Door locks:	1	2	1
Capacity:	610 l	1325 l	610 l
Temperature:	+4°C	+4°C	-35°C
Air circulation:	Forced Air circulation		
Defrost:	Fully Automatic		
Ext Dimensions WxDxH mm	710 x 800 x 1985	1420 x 800 x 1985	710 x 800 x 1985
Int Dimensions WxDxH mm	590 x 675 x 1380	1300 x 675 x 1380	590 x 675 x 1380
Cabinet material:	Stainless Steel inside and outside		
Insulation:	60 mm Non-CFC, Foamed Polyurethane		
Electrical:	230 V / 50 Hz		
Certification:	CE Certified		
Weight:	190 kg	335 kg	205 kg
Power:	9,40 kW/24 h	10,80 kW /24 h	14,2 kW/24 h
Drawers: (W x D x H)	6 roll-out drawers 500 x 610 x 150 mm	12 roll-out drawers 500 x 610 x 150 mm	8 roll-out drawers 500 x 610 x 150 mm
Microprocessor:	Adjustable setpoint, high alarm, low alarm, door alarm (audible and visual)		
Recorder:	4" 7-day chart recorder		
Lights:	Dual bulb, quick-change fluorescent		No light

Standard Specifications **Slimline**[®] Combination +4 °C / -35 °C

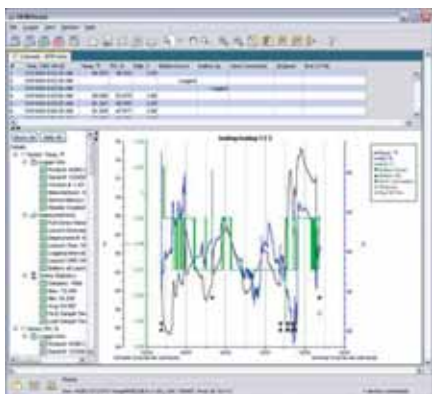
Model no:	LRF300	BBP300
Weight:	145 kg	190 kg
Shelves / Drawers: (W x D x H)	2 x 2 shelves 530 x 650 mm	2 x 3 roll-out drawers 500 x 610 x 150 mm
Recorder:	no	2 x 4" 7-day chart recorders
Doors:	1 Glass Door (double layer) 1 Stainless Steel Door	
Capacity	2 x 286 l	
Temperature:	+4°C upper part / -35°C lower part	
Air circulation:	Forced Air circulation	
Defrost:	Fully Automatic	
Ext Dimensions WxDxH mm	710 x 800 x 1985	
Int Dimensions WxDxH mm	590 x 675 x 590 (x 2 compartments)	
Cabinet material:	Stainless Steel inside and outside	
Insulation:	60 mm Non-CFC, Foamed Polyurethane	
Electrical:	230 V / 50 Hz	
Certification:	CE Certified	
Power:	5,90 / 9,40 kW/24 h	
Microprocessor:	Adjustable setpoint, high alarm, low alarm, door alarm 2 separate controllers (audible and visual)	
Lights:	Dual bulb, quick-change fluorescent for upper part	



Slimline[®] Options & Accessories

Data acquisition package

The Slimline data acquisition package consists of software, data logger and 4 temperature sensors. It is very easy to program, display, export and analyse data.



- 43,000 measurements memory capacity;
- 4 temperature sensors (1,8 m cable);
- Battery level indication at launch;
- USB connector for fast programming and readout;
- One-click export to Microsoft[®] Excel or other ASCII-compatible programs;
- Copy and paste graph images into other programs;
- Zoom and axis-control tools to focus on data of interest;
- Very low package price!



Additional options & accessories



Vapour Proof Power Socket



7-day Chart Recorder



Sample Throughput

Model no:	Description
CF0047	4" Chart recorder, circular 7-day
CP0047	Chart recorder paper (52 pieces)
IP0047	Red pens for Chart recorder (6 pieces)
DR150	Stainless Steel roll-out drawer (including pair of guides)
GR150	Additional shelf (including pair of guides)
ST100	Sample Throughput hole 18 mm
PS100	Vapour proof power socket (double)
DL100	Data Acquisition package (logger, software and 4 sensors)
DV44	Flexible divider kit for drawer
PLC	Touch Screen monitoring system for blood bank line

For further detailed questions, such as pull down temperature graphs, heat output or other ilShin products, please contact:

Your local ilShin dealer: